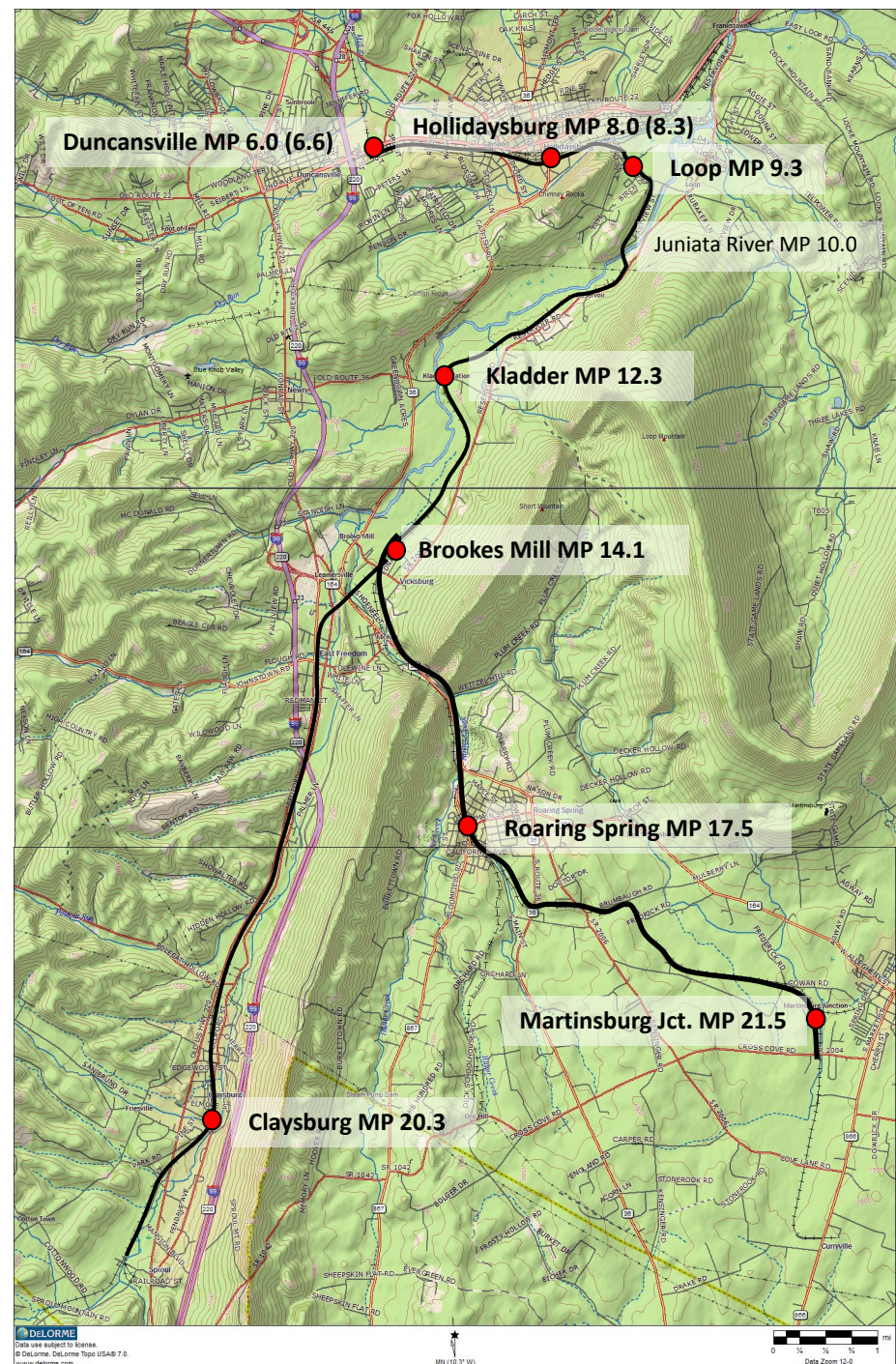


Everett Railroad Photo Special Sat., Nov. 6, 2021

- 5:45 Arr. Roaring Spring (photos)
- 6:30 Dep. Roaring Spring
- 6:45 Arr. Renaissance Nutrition (unload pax)
- 6:50 Dep. Renaissance Nutrition
- 7:05 Arr. Martinsburg Jct. (p/u boxcars, turn)
- 7:15 Dep. Martinsburg Jct.
- 7:30 Arr. Renaissance Nutrition (photos)
- 7:49 *sunrise (111°)*
- 8:05 Dep. Renaissance Nutrition (shove)
- 8:20 Arr. Martinsburg Jct. (photos) (wye train)
- 8:50 Dep. Martinsburg Jct. (shove)
- 8:55 Arr. Cowan Rd. (photos)
- 9:30 Dep. Cowan Rd. (shove)
- 10:00 Arr. Roaring Spring (photos) (water)

- 10:45 Dep. Roaring Spring (shove)
- 11:30 Arr. Kladder (photos)
- 12:01 Dep. Kladder (shove)
- 12:10 Arr. Reservoir / Juniata (photos)
- 12:45 Dep. Reservoir / Juniata
- 13:30 Arr. Roaring Spring (water) (photos)

- 14:15 Dep. Roaring Spring
- 14:30 Arr. Renaissance Nutrition (photos)
- 15:00 Dep. Renaissance Nutrition
- 15:15 Arr. Martinsburg Jct. (photos) (wye train)
- 15:45 Dep. Martinsburg Jct.
- 15:50 Arr. Frederick Rd. (photos)
- 16:20 Dep. Frederick Rd. (shove)
- 16:25 Arr. Martinsburg Jct. (photos) (wye train)
- 17:15 Dep. Martinsburg Jct. (shove)
- 17:30 Arr. Cowan Rd. (photos)
- 18:04 *sunset (249°)*
- 18:10 Dep. Cowan Rd. (shove)
- 18:30 Arr. Roaring Spring (photos)
- 19:30 Dep. Roaring Spring



Important information about the morning photo session at Roaring Spring station

We are very fortunate to be able to photograph this beautifully restored station. Please be considerate of Roaring Spring residents as we photograph Everett 11 in the pre-dawn hours. We want the residents of Roaring Spring, and the people of the Everett Railroad, to approve of our conduct and welcome us back next time.

Quiet Please! Many nearby residents are still sleeping. Please keep your voice down. Please don't slam automobile doors.

We intend to follow the schedule to the minute, without making announcements.

(Yes, we really mean that. No, we won't be changing the plan at the last minute.)

Our train will be in position by 5:45am. (Hint: if you arrive early, you **may** get a few extra minutes of the first setup.)

5:45am - 6:00am: Diagram 1A (phone box / baggage / LCL activity, and crew member checking running gear)

6:00am: locomotive will reposition. Move to the next set of scenes.

6:00am - 6:15am: Diagram 2A (crew break, LCL loading through the combine door)

6:15am: locomotive will reverse and couple to combine. Move to photo lines for the third scene.

6:20am: Diagram 3A (false departure with illuminated steam from cylinder cocks)

6:25am: board train.

6:30am: train departs Roaring Spring.

Understand the information on the three diagrams before you arrive. Ask any clarifying question that you have well in advance of the event. (I am happy to schedule a phone call with you.) Arrive early to familiarize yourself with the scenes. (The wise photographer will spend some time at Roaring Spring station Friday afternoon if possible.)

We won't be setting up fixed photo lines for the entire group, and you won't spend more than a minute or two actively photographing each scene. You and a few other photographers will set up for your photo when there is space, take 1 to 2 minutes to confirm that you have a good photo, then give way to the other photographers. Feel free to come back to a scene after everyone has had a chance to photograph it.

If you have a specific request for one of the people in a scene, feel free to ask ("look at your watch / hold that prop up" etc.).

I recommend printing these pages, and preparing a plan for each 15 minute segment and the runby.

Depending on your camera's abilities, you may choose to shoot handheld instead of using a tripod and cable release.

Consider setting **vibrating** alarms on your phone to mark 6:00am and 6:15am.

"Are you still planning to . . . ?" Yep. Nothing has changed.

Saturday – 1A – Roaring Spring Station

(Note: train may be in position a few minutes early) 5:45am – 6:00am

QUIET PLEASE, residents are still asleep.

Bring a tripod, shutter release, and headlamp or flashlight.

Print this diagram to reference during the photo session.

Be considerate of other photographers.

Start at any position and move at your own pace.

Follow the dashed line to move between scenes.

At 6:00am the train will move forward to reposition. This is your cue to immediately move to the scenes in the next diagram (2A).



Scene 1: Phone Box / Baggage / LCL loading / unloading.

Actors have some instructions, but will accept direction from photographers.

You may photograph from inside the baggage compartment. Enter from the coach area.

Actors: 3 (1 phone, 2 LCL)



Scene 2: Crew member oiling running gear, seen from engineer's side.

Actors: 1 (crew member)

Saturday – 2A – Roaring Spring Station

6:00am - 6:15am

QUIET PLEASE, residents are still asleep.

Bring a tripod, shutter release, and headlamp or flashlight.

Print this diagram to reference during the photo session.

Be considerate of other photographers.

Start at any position and move at your own pace.

Follow the dashed line to move between scenes.

At 6:15am the train will reverse to prepare for the next scene. This is your cue to immediately move to the scenes in the next diagram (3A).



Scene 3: Crew on meal break.

Actors: 3-5



Scene 4: LCL loading through the Engineer' side combine door.

Saturday – 3A – Roaring Spring Station

6:20am

QUIET PLEASE, residents are still asleep.

Bring a tripod, shutter release, and headlamp or flashlight.

Print this diagram to reference during the photo session.

Be considerate of other photographers.

At 6:15am the train will back up to prepare for the runby. Being moving to one of the two photo lines (your choice) indicated on the diagram as soon as the train begins its reverse move.



Scene 5: false departure with steam from the cylinder cocks illuminated.

The steam from the cylinder cocks will be illuminated at slightly different locations for each photo line.

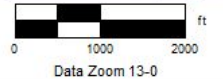
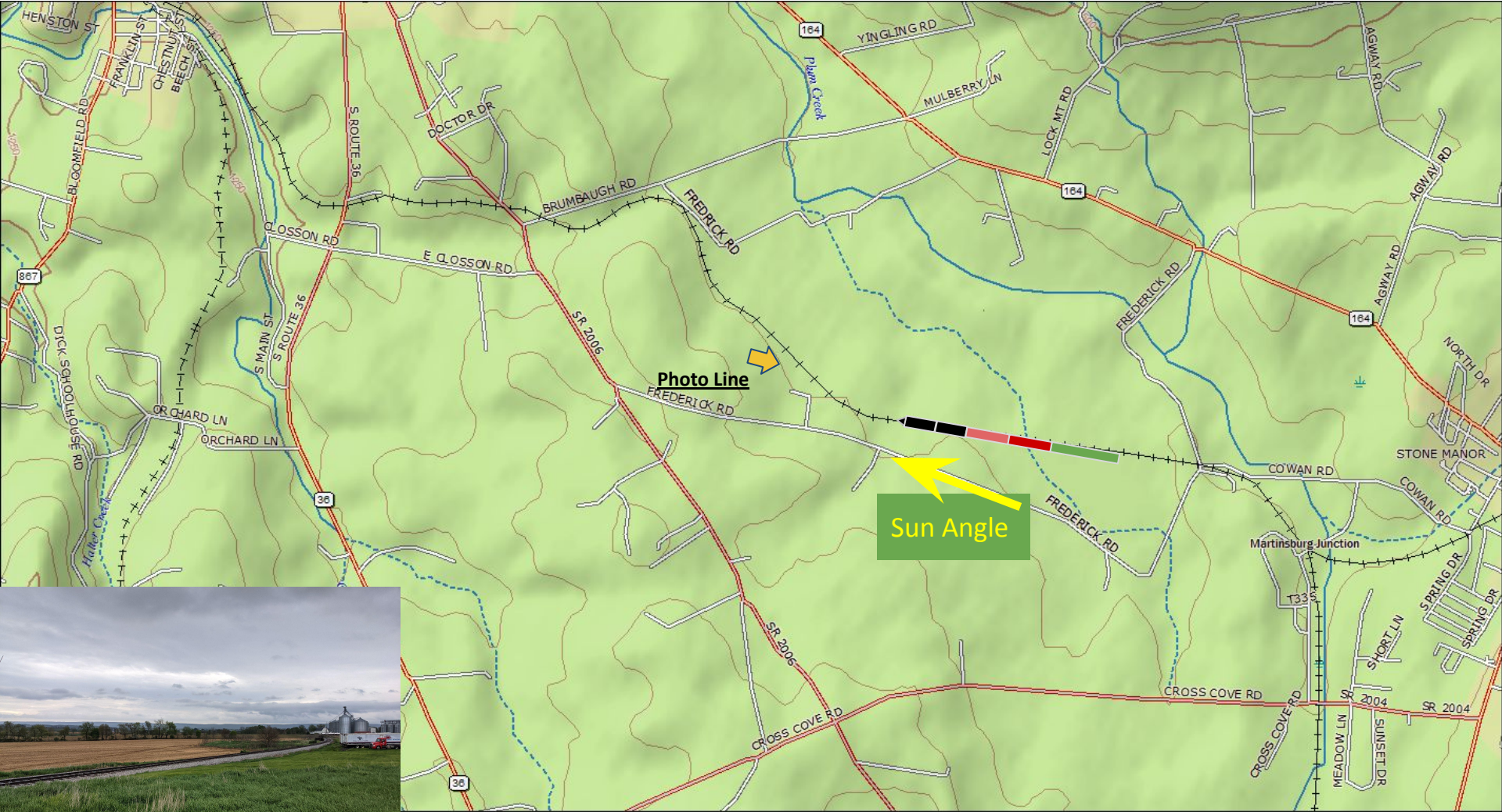


Board the train immediately after runby.

Departure is at 6:30am.

Saturday – 4A – near Renaissance Nutrition

Arrive & Detrain 6:45am
Train wye at Martinsburg Jct. 6:45am - 7:30am
Photography 7:30am – 8:00am
sunrise (111°) 7:49am
Depart for Martinsburg Jct. 8:05am

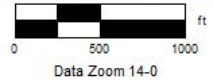
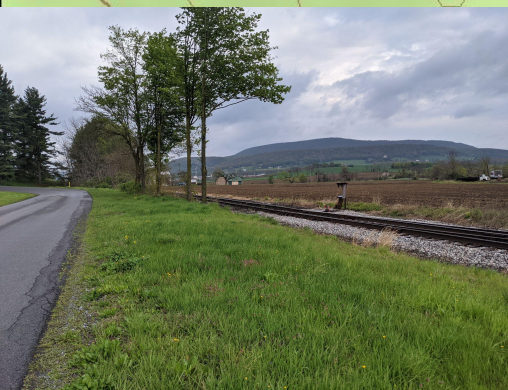


Saturday – 5A – Martinsburg Jct.

Arrive 8:20am
Photography 8:25am –8:45am
Depart 8:50am, locomotive facing east.

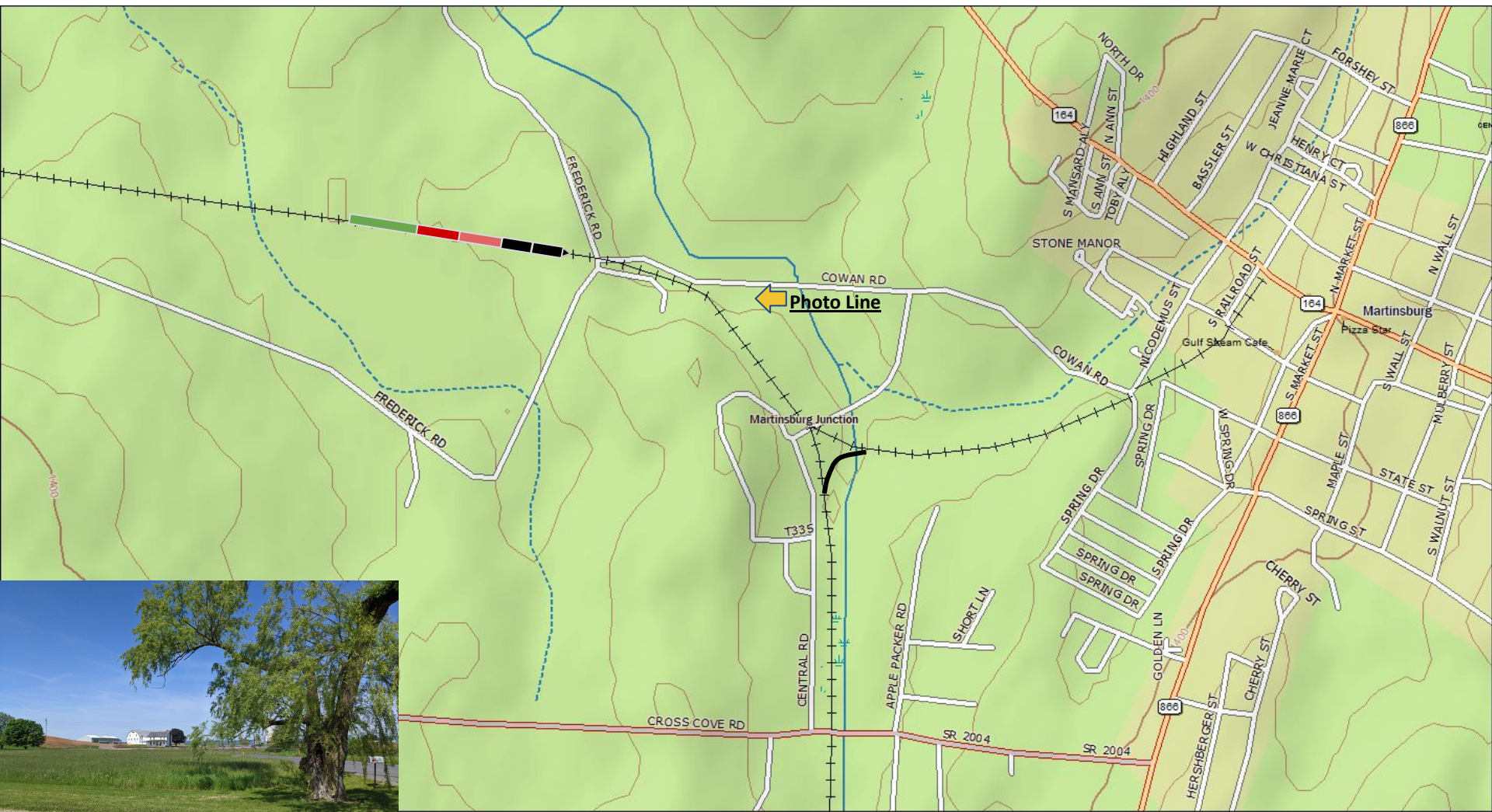
Scene: TO at Phone booth (nb), truck with produce (sb).

- Actors:
- Phone: 1
- Truck / produce: 1



Saturday – 6A – Cowan Rd.

Arrive 8:55am
Photography 9:00am – 9:25am
Depart 9:30am



MN (10.3° W)

0 500 1000 ft
Data Zoom 14-0

Saturday – 7A – Roaring Spring Station

Arrive 10:00am
Photography 10:05am – 10:30am
Take water
Depart 10:45am

First runby will be a station stop, LCL activity and passenger detraining / boarding, and departure.

There will be enough time to photograph the row of houses and get to the departure (~150 yards).

Second runby will cover the row of houses and stop between the station and crossing for participant boarding.



Actors:
Flag: 1-2
LCL: 1-2

Passengers: 1-2

Hammondsport station sign.

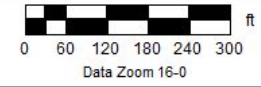


Saturday – 8A – Kladder

Arrive 11:30am
Photography 11:35am – 11:55pm
Depart 12:01pm



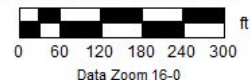
MN (10.3° W)



Saturday – 9P – Juniata bridge

Arrive 12:10pm
Photography 12:15Pm – 12:40pm
Depart 12:45pm

someone fishing in the foreground / background?



Saturday – 10P – Roaring Spring Station

Arrive 1:30pm
Photos 1:45pm - 2:10pm
Depart 2:15pm



Locomotive will stop at hydrant. Detrain and walk forward.

First runby will be a station stop, LCL activity and passenger detraining / boarding, and departure.

Actors:

LCL: 1-2

Passengers: 1-2

Hammondsport station sign.



Saturday – 11P – near Renaissance Nutrition

Arrive 2:30pm
Photography 2:35pm – 2:55pm
Depart for Martinsburg Jct. 3:00pm



0 1000 2000 ft
Data Zoom 13-0

Saturday – 12P – Martinsburg Jct.

Arrive 3:15pm
Photography 3:20pm – 3:40pm
Depart 3:45pm, train facing west.

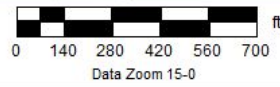
Phone booth / Vintage truck near phone box selling produce.

Actors:
Phone box: 1



Saturday – 13P – Frederick Rd.

Arrive 3:50pm
Photography 3:55pm – 4:15pm
Depart 4:20pm



Saturday – 14P – Martinsburg Jct.

Arrive 4:25pm
Photography 4:30pm – 5:10pm
Depart 5:15pm

Baseball game on lawn west side of Central Rd. (batter / catcher / umpire, maybe others), with spectators on quilt under the trees. Train rolls by in background, vintage cars pass on road.

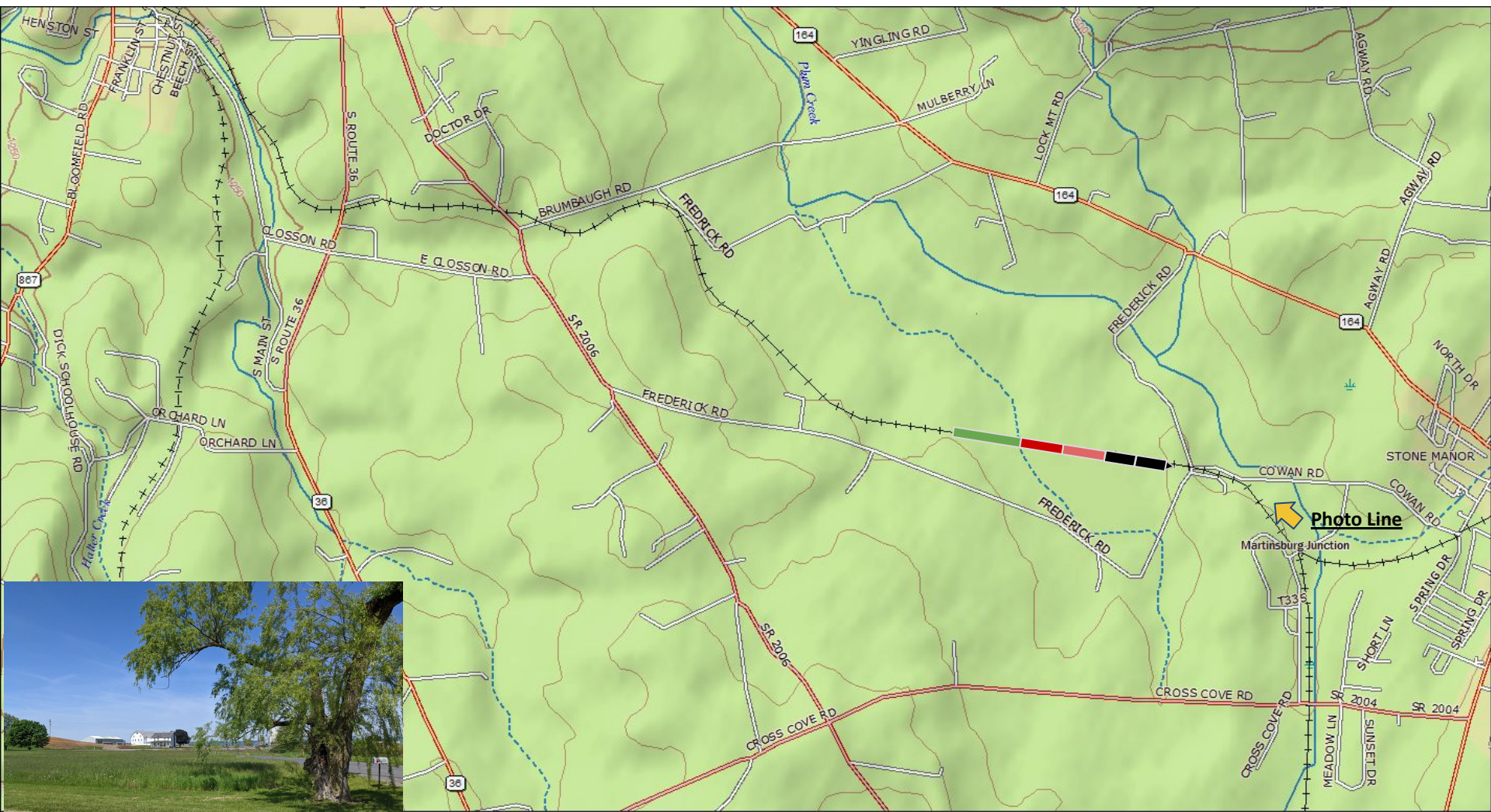
Props: Bat, Catcher's Mitt, uniform shirt / cap, Umpire, blanket, picnic supplies

Actors: 4+ (Batter, Umpire, Spectators)

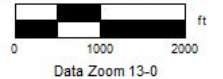


Saturday – 15P – Cowan Road

Arrive 5:30pm
Photos 5:30 - 6:10pm
18:04 sunset (249°)
Depart 6:10pm



MN (10.3° W)



Important instructions about the evening photo session at Roaring Spring Station

We are very fortunate to be able to photograph this beautifully restored station.

Please be considerate of Roaring Spring residents as we photograph Everett 11 in the pre-dawn hours.

We want the residents of Roaring Spring, and the people of the Everett Railroad, to approve of our conduct and welcome us back next time.

So our highest priority is being quiet, not overwhelming local parking lots, and being considerate of the other photographers as we take our photos.

BE PREPARED: Understand the instructions on this and the next three pages before you arrive.

Ask any clarifying question that you have well in advance of the event to keep noise down.

Print these pages out, make notes to yourself as appropriate, prepare your plan for each 15 minute segment and the runby, and bring your plan and your notes with you. Consider setting **vibrating** alarms on your device to mark 6:00am and 6:15am.

We intend to follow this schedule to the minute, without making announcements. (People are asleep, see below.)

(Yes, we really mean that. No, we won't be changing the plan at the last minute. You can trust us.)

No. 11 will mark 6:00am and 6:15am, both to reposition for the next setup and to mark the time.

"Are you still planning to . . . ?" Yep. Nothing has changed.

NOISE LEVELS: Quiet Please!

Please keep your voice down.

Please don't slam automobile doors.

SCHEDULE: our train will be in position by 6:45pm. (Hint: if you set up early, you **may** get a few extra minutes of the first setup.)

6:45pm - 7:00pm: station overview from Park Ave., and 'Lantern Girl' distributing lanterns to crew members.

6:00am: train will reposition slightly.

7:00pm - 7:15pm: , phone box and crew taking a meal break.

7:20pm: flagman silhouetted by illuminated steam.

Saturday – 16P – Roaring Spring Station

6:45pm – 7:00pm

Bring a tripod, shutter release, and headlamp or flashlight.

Print this diagram to reference during the photo session.

Be considerate of other photographers.

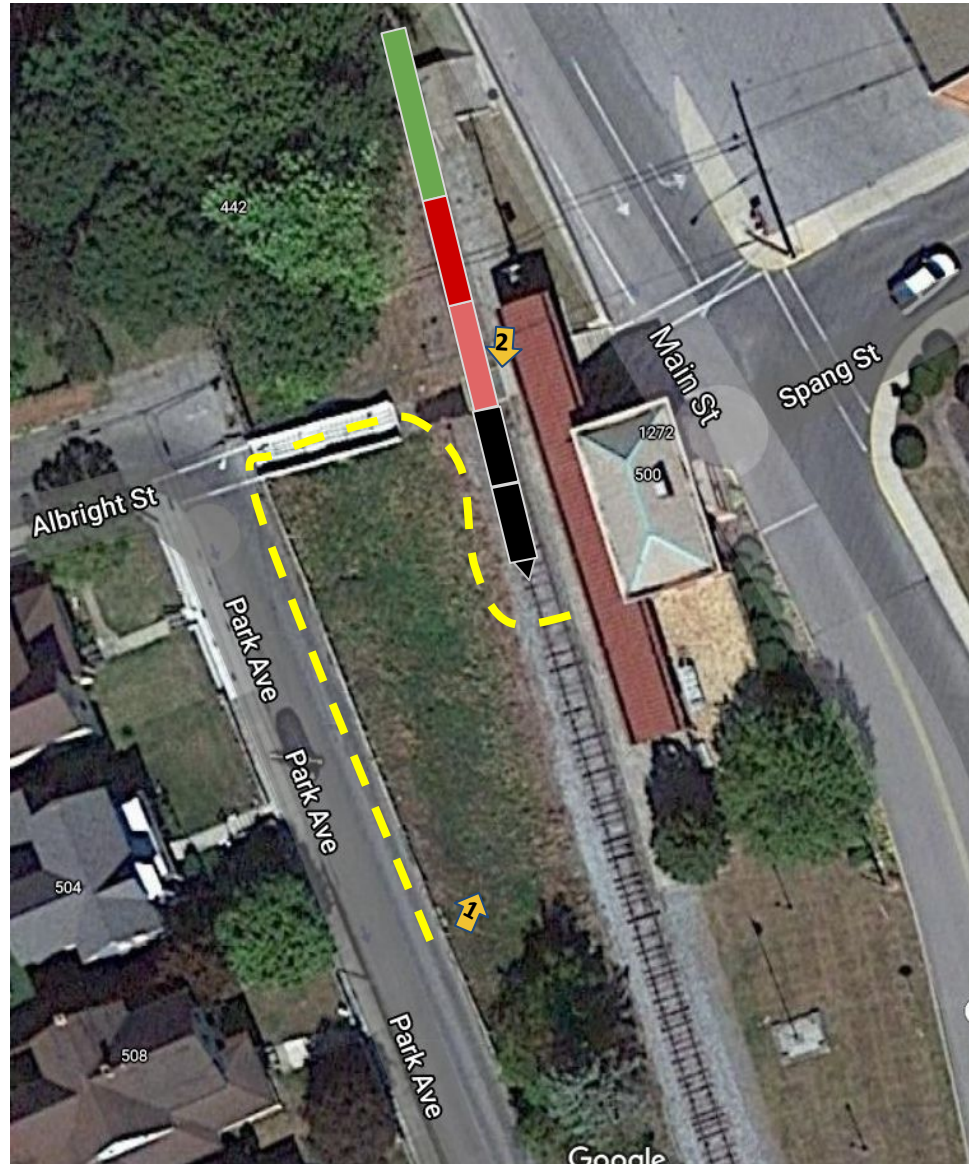
Start at any position and move at your own pace.

Follow the dashed line to move between scenes.

At 7:00pm the train will move forward to reposition. This is your cue to immediately move to the scenes in the next diagram (6P).



Scene 1: station overview.



Scene 2: a scene inspired by a TIME / LIFE magazine photo of 'Lantern Girl' distributing lanterns to PRR crewmen at the beginning of a shift.

Actors have some instructions, but will accept direction from photographers.

Actors: >1 (Lantern Girl, lantern recipients)

Cab / water cooler

Hammondsport station sign.

Saturday – 17P – Roaring Spring Station

7:00pm – 7:15pm

Bring a tripod, shutter release, and headlamp or flashlight.
Print these diagrams to reference during the photo session.

Be considerate of other photographers.

Start at any position and move at your own pace.

Follow the dashed line to move between scenes.



Scene 3: LCL loading at the 'Milk Platform' with locomotive in background.

You may photograph from inside the baggage compartment. Enter from the coach area.

Actors:

Phone box: 1

LCL: 1-2

Crew: 2+



Scene 1: station overview continues.



Scene 4: Crew member checking bearing boxes with locomotive in the background.

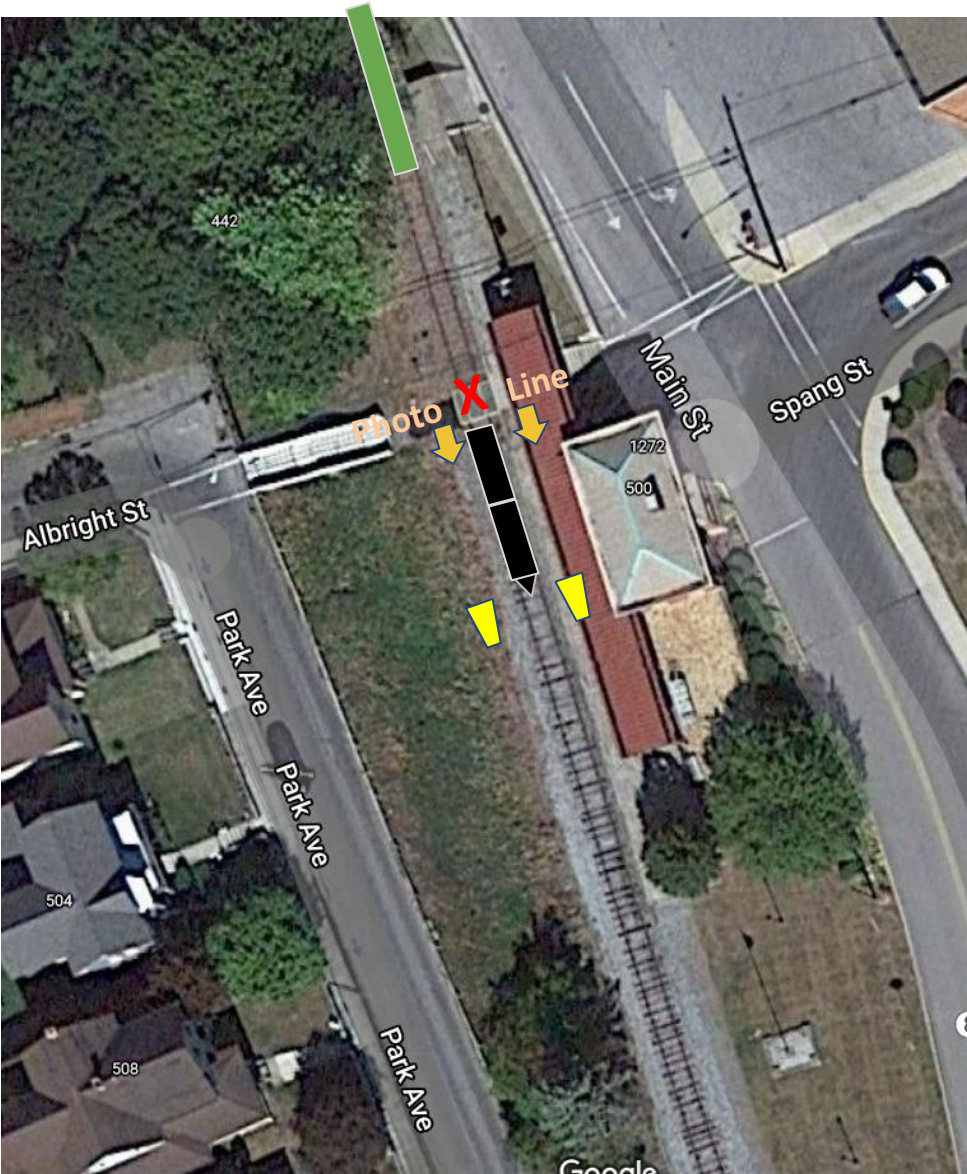
7:20pm - 7:30pm

Saturday – 18P – Roaring Spring Station

At 7:15pm the train will reverse and no. 11 will uncouple from the combine, then move forward. Start moving to the pedestrian crossing and form photo lines on each side of the track as soon as the locomotive begins its reverse move. Do not stand on the track. You may use the steps.

Bring a tripod, shutter release, and headlamp or flashlight.
Print this diagram to reference during the photo session.
Be considerate of other photographers.

Actors: 1



Scene 5: a blending of two suggestions by Jeffrey Stoner.

The photo line will be at both sides of the tender looking forward, as in the OWL photo. Steam from the cylinder cocks will be illuminated. A railroader with a lantern will be silhouetted. You may photograph both sides as time and space allow.



This is the final setup of the day. Thank you for attending.