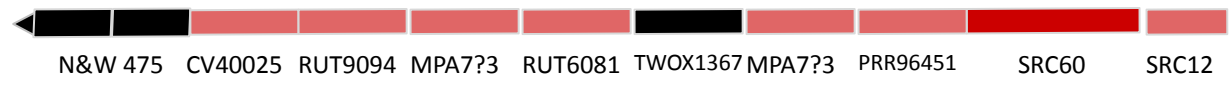
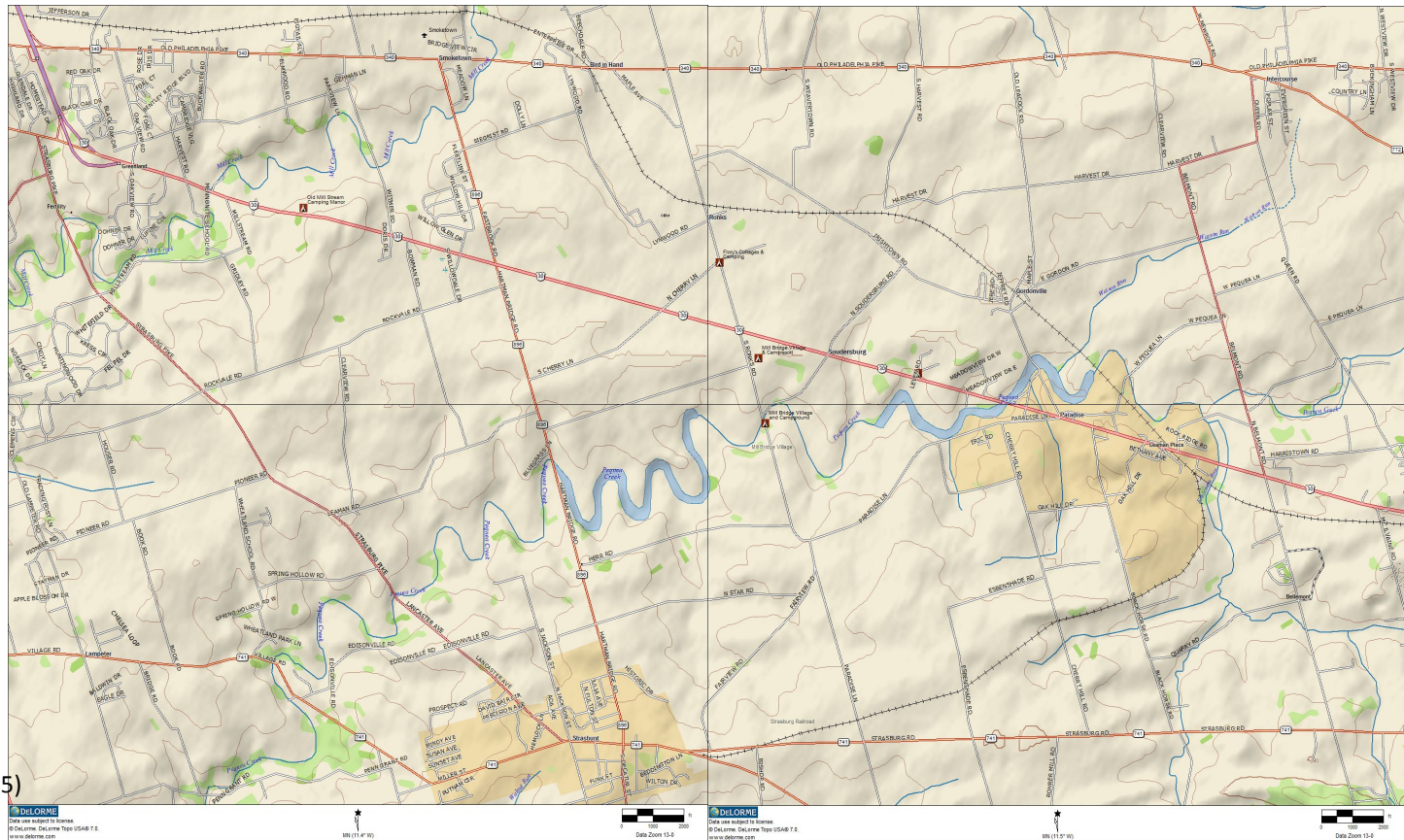


Strasburg Rail Road Photo Special Sun., Nov. 7, 2021

- 6:00 Dep. E. Strasburg
- 6:15 Arr. Esbenshade Rd.
- 6:40 *sunrise (111°)*
- 7:05 Dep. Esbenshade Rd.
- 7:10 Arr. Carpenters / Beilers
- 8:05 Dep. Carpenters / Beilers
- 8:10 Arr. Long Curve
- 8:40 Dep. Long Curve
- 8:45 Arr. Groff's
- 9:15 Dep. Groff's
- 9:20 Arr. the Flats (VVF)
- 9:45 Dep. the Flats (VVF)
- 9:55 Arr. E. Strasburg
- 10:30 Dep. E. Strasburg
- 10:40 Arr. Esbenshade Rd.
(meet 11:00 dep. at Groff's)
- 11:30 Dep. Esbenshade Rd.
- 11:35 Arr. E. Strasburg

- 12:35 Dep. E. Strasburg
- 12:45 Arr. Groff's (meet ~ 13:05)
- 13:10 Dep. Groff's
- 13:15 Arr. Carpenters / Beilers
- 14:00 Dep. Carpenters / Beilers
- 14:05 Arr. Groff's (meet ~14:10, 14:35)
- 14:40 Dep. Groff's
- 14:50 Arr. Esbenshade Rd.
- 15:30 Dep. Esbenshade Rd.
- 15:35 Arr. Groff's (Meet ~15:40)
- 15:45 Dep. Groff's
- 15:55 Arr. the Flats (VVF)
- 16:15 (meet at E. Strasburg)
- 16:55 *sunset (249°)*
- 17:20 Dep. the Flats (VVF)
- 17:35 Arr. E. Strasburg
- 18:30 End



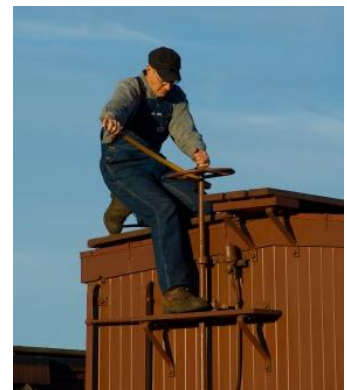
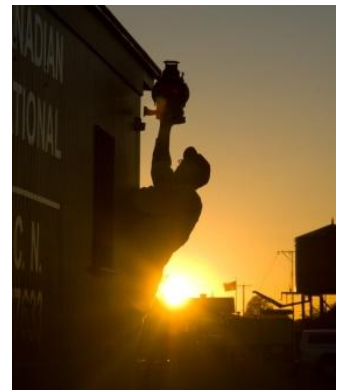
Consist at Departure, West to East:

- N&W 475
- CV40025 (boxcar)
- Rutland 9094 (boxcar, without 'Whippet' lettering)
- MPA 713 or 723 (boxcar)
- Rutland 6081 (boxcar, with 'Whippet' lettering)
- TWOX 1367 (flying A tankcar)
- MPA 723 or 713 (boxcar)
- PRR 96451 (boxcar)
- SRC 60 (combine)
- SRC 12 (caboose)

Sunday – 1A – Esbenshade Rd.

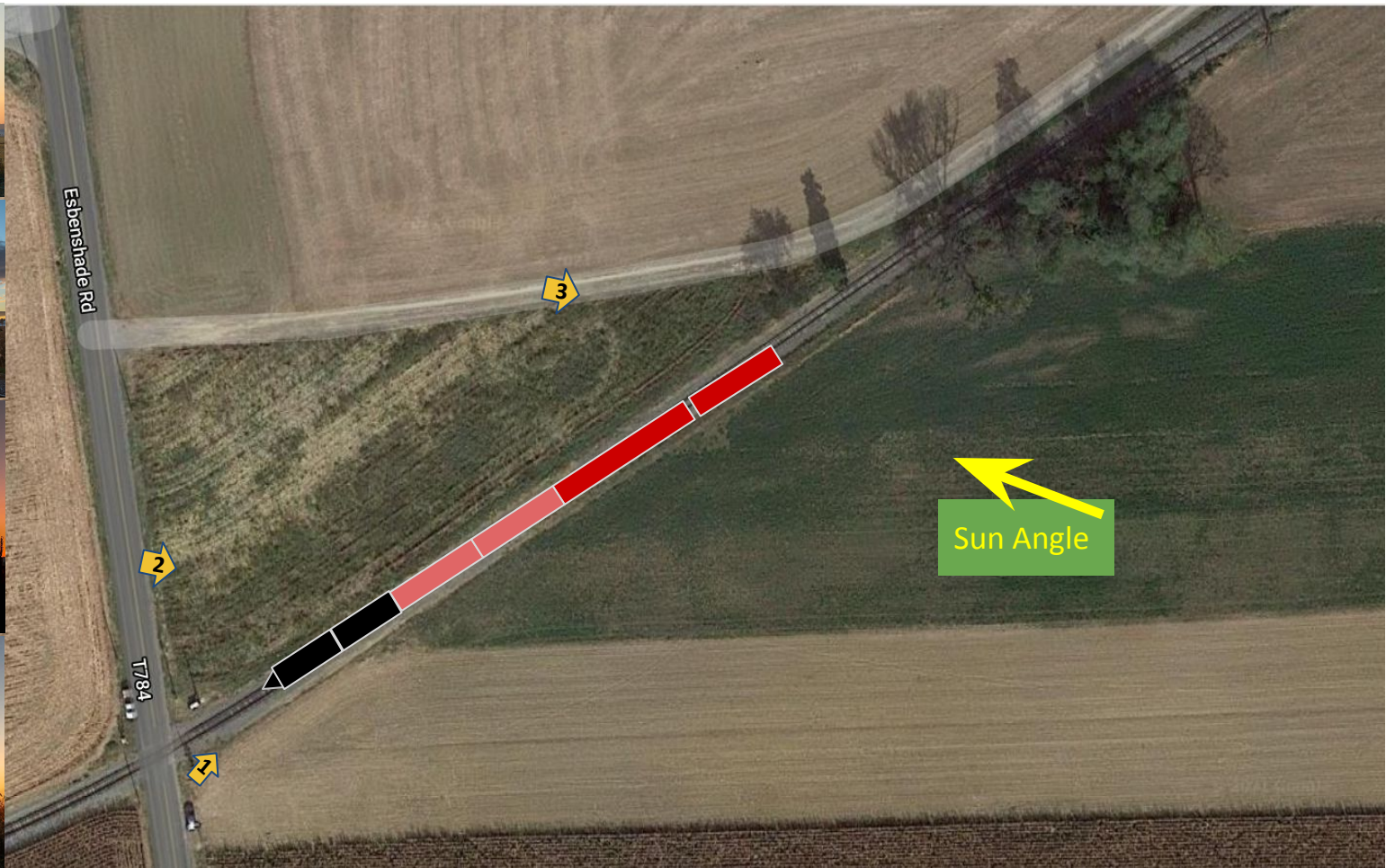
Depart E. Strasburg 6:00am
Arrive Esbenshade Rd. 6:10am
Photography 6:15am – 7:00am
6:40am sunrise (111°)
Depart 7:05am

Bring a tripod, shutter release, and headlamp or flashlight.
Print this diagram to reference during the photo session.
Be considerate of other photographers.
Start at any position and move at your own pace.



Sunday – 2A – Esbenshade Rd.

6:30am - 7:00am
6:40am sunrise (111°)
Depart 7:05am



Sunday – 3A – Beilers / Carpenters

Arrive 7:10am
Photography 7:15am – 8:00am
Depart 8:05am

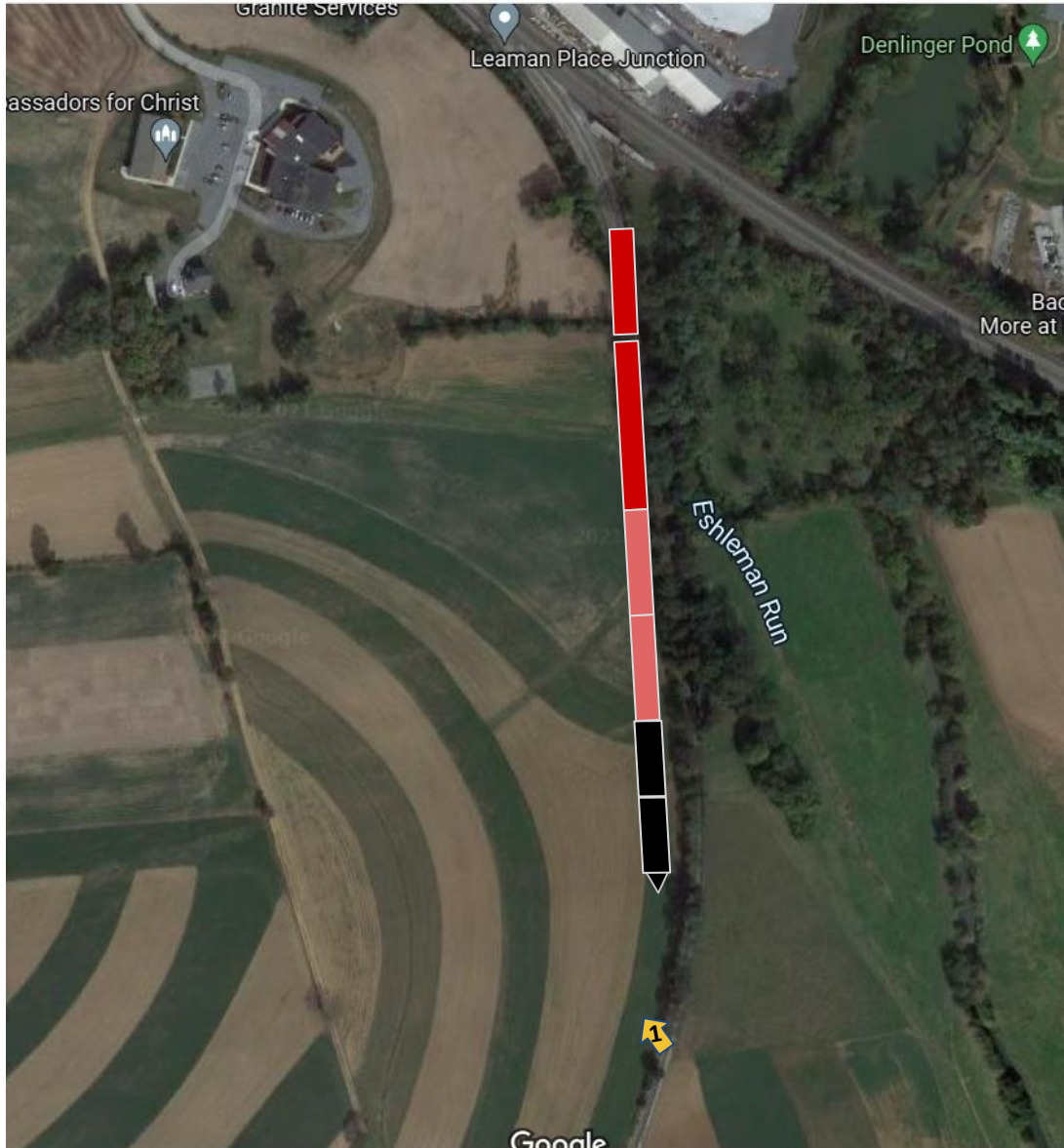
Grave prep / decoration
(hoe, rake, buckets, flags, flowers?, etc.)

<http://www.ferreedescendants.com/carpenterscemetery.htm>



Sunday – 4A – Long Curve

Arrive 8:10am
Photography 8:15am – 8:35am
Depart 8:40am



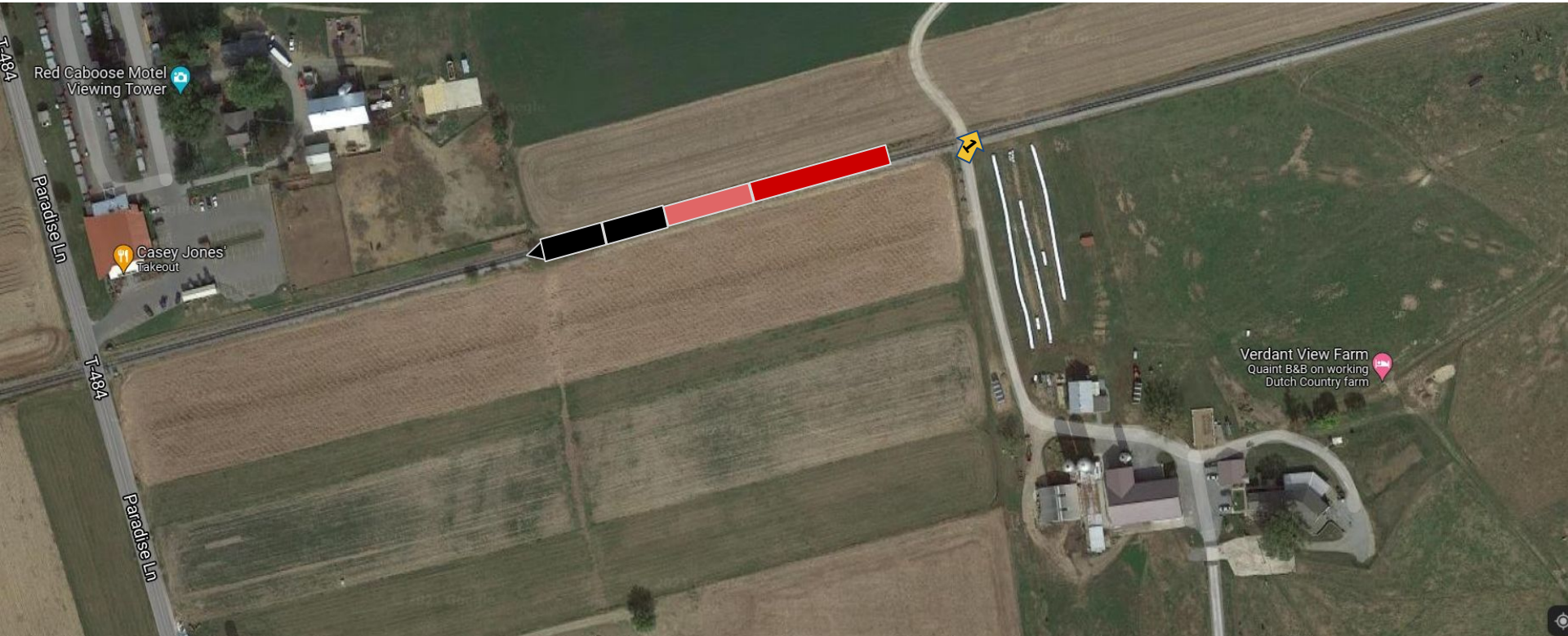
Sunday – 5A – Groff's (siding)

Arrive 8:45am
Place freight cars in siding, place SRC 12 at west end of freight cars
Leave room at west end of siding for meet
Photography 8:50am - 9:10am
Depart 9:15am with PRR 96451, SRC 60



Sunday – 6A – The Flats (Verdant View farm)

Arrive 9:20am
Photography 9:25am – 9:40am
Depart 9:45am



Sunday – 7A – East Strasburg

Arrive 9:55am
Photography 10:00am – 10:25am
Depart 10:30am



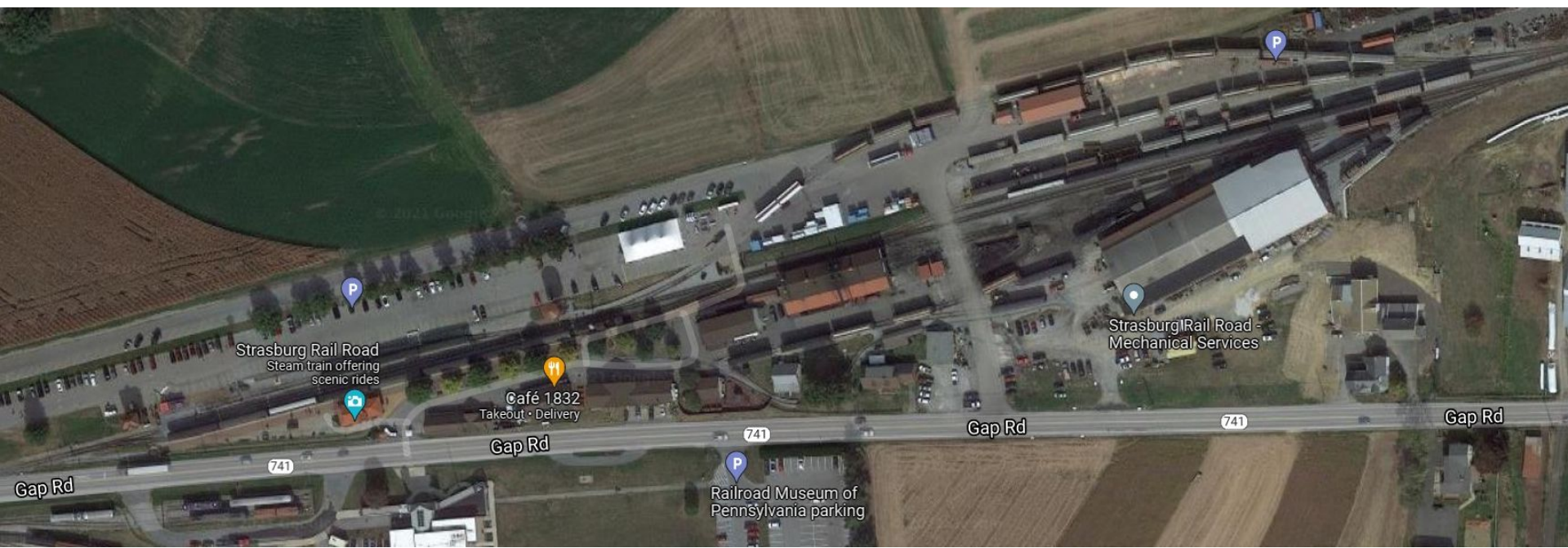
Sunday – 8A – Esbenshade Rd.

Arrive 10:40am
Photography 10:45am – 11:00am
Leave passengers on ground and clear at Groff's for ~11:10am for EB Timetable
Train
Pick up SRC 12 and freight cars
Pick up passengers (runby on approach)
Depart 11:30am



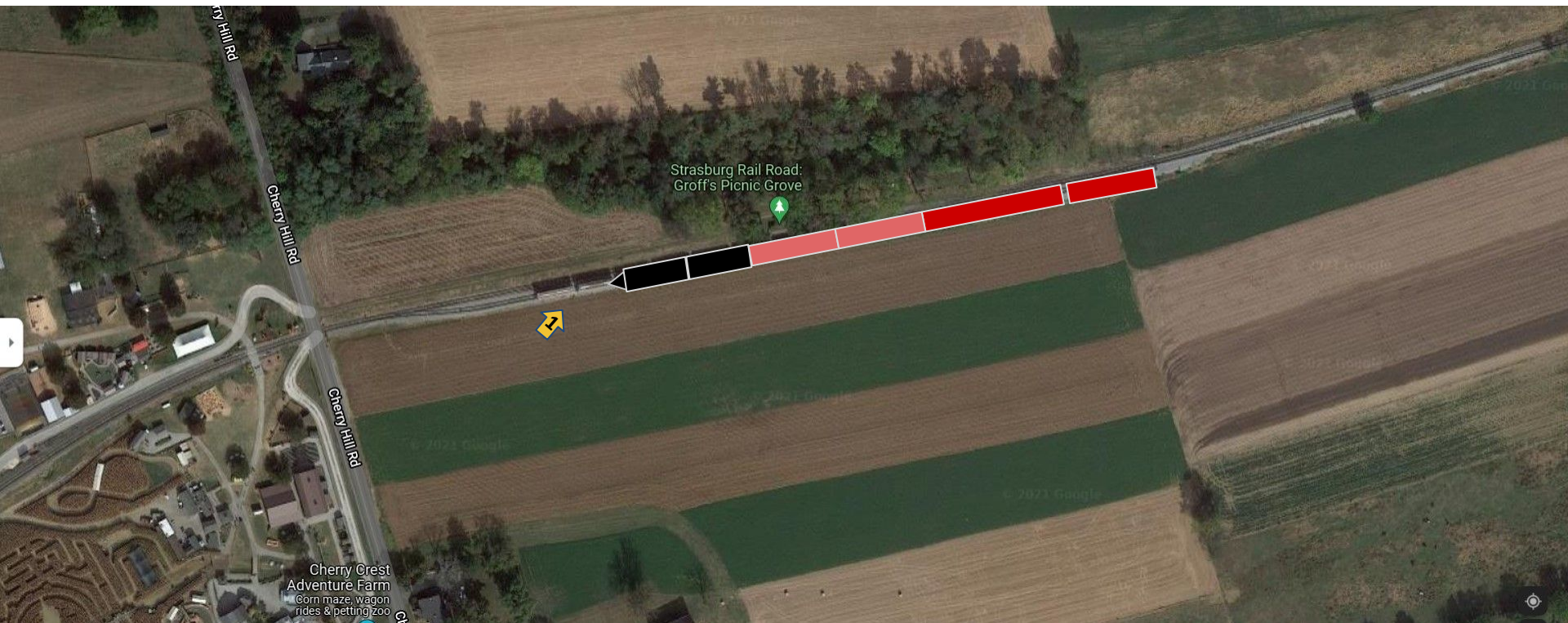
Sunday – 9A – East Strasburg

- Arrive 11:35am
- AM passengers off
- Pick up lunches
- Take Water / Coal / dump ash (as needed)
- Crew Change
- PM passengers on
- Depart 12:35pm



Sunday – 10P – Groff's (siding)

Arrive 12:45pm
Photography 12:50pm - 1:05pm
Meet WB Timetable Train ~1:05pm
Depart 1:10pm



Sunday – 11P – Beilers / Carpenters

Arrive 1:15pm
Photography 1:20pm – 1:55pm
Depart 2:00pm

Grave prep / decoration
(hoe, rake, buckets, flags, flowers?, etc.)

<http://www.ferreedescendants.com/carpenterscemetery.htm>



Sunday – 12P – Groff's (siding)

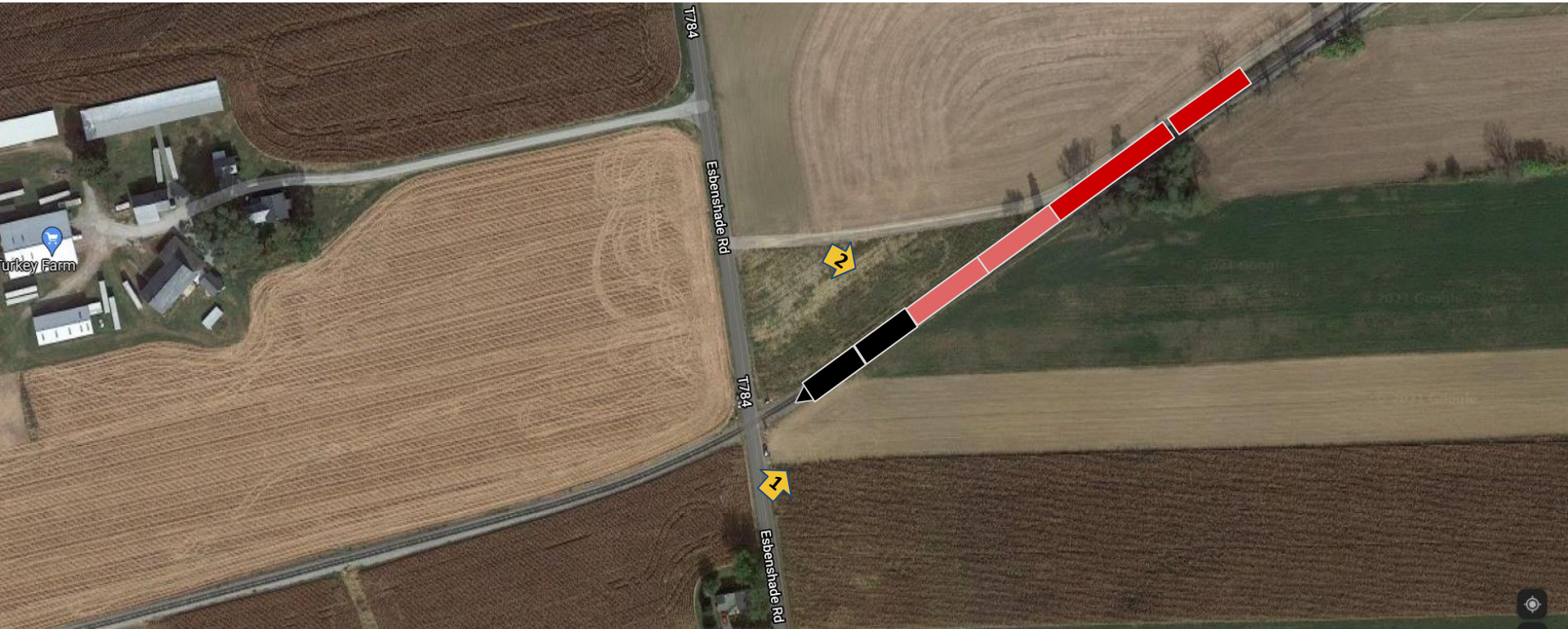
Arrive 2:05pm
Photography 2:10pm – 2:35pm
Meet timetable train ~2:10pm and ~2:35pm
Depart 2:40pm



Sunday – 12P – Esbenshade Rd.

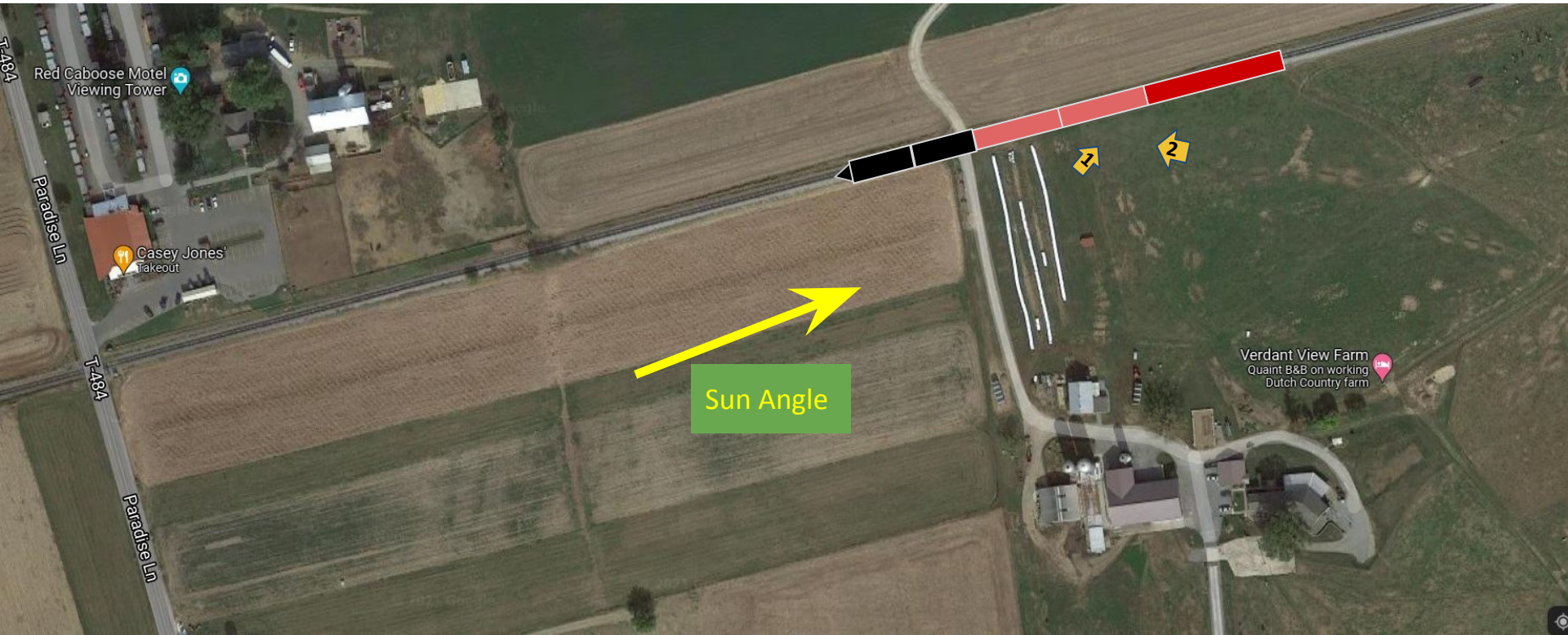
Arrive 2:50pm
Photography 2:55pm – 3:25pm
Depart 3:30pm

Clear at Groffs for ~3:45pm EB Timetable train



Sunday – 13P – The Flats (Verdant View Farm)

Arrive 3:55pm
Photography 4:00pm – 5:15pm
Clear at E. Strasburg for ~4:15pm WB Timetable train
sunset (249°) 4:55pm
Depart 5:20pm





Sunday – 15P – East Strasburg

J Tower

Arrive 5:30pm

Photography 6:00pm - 6:15pm

Girl delivering lanterns at J Tower

Dark side views of N&W 475 fireman's side



Scene 1: a scene inspired by a TIME / LIFE magazine photo of 'Lantern Girl' distributing lanterns to PRR crewmen at the beginning of a shift.

Actors have some instructions, but will accept direction from photographers.



Sunday – 16P – East Strasburg

Arrive 5:30pm
Photography 5:45pm - 6:30pm
Front view of N&W 475
Carman with lantern
End 6:30pm

